

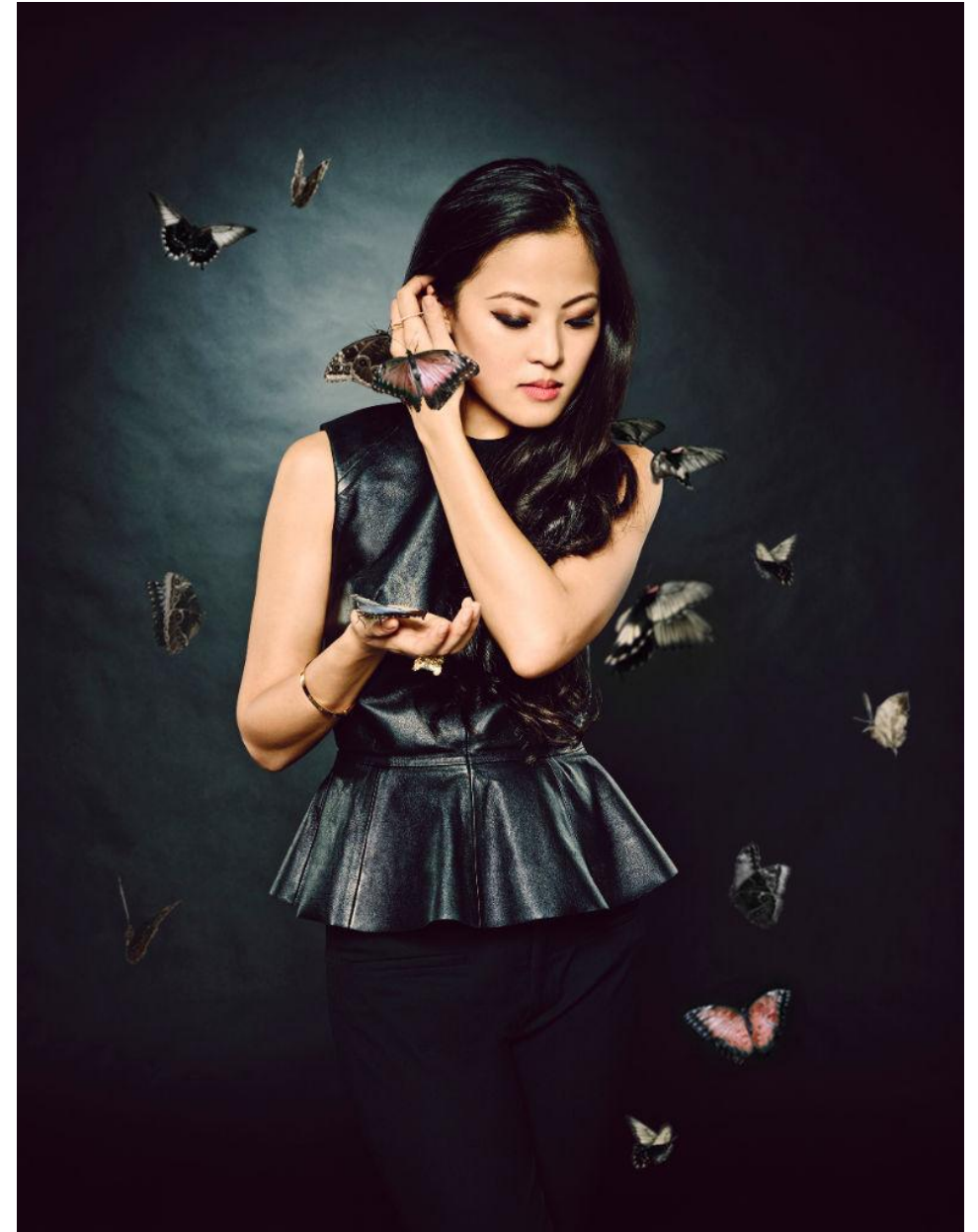
ONEALDWYCH

Summer Tea Salon with Anabela Chan

July 2025

Who is Anabela Chan?

The first fine jewellery brand in the world to champion laboratory-grown gemstones with a focus on ethical and sustainable innovations. Worn by numerous celebrities and royalty, including Beyoncé, Rihanna, Lady Gaga and Taylor Swift, you can find their flagship boutique on Sloane Street.



ANABELA CHAN

Fruit Gems™

This is the new collection from Anabela Chan which turns waste to wonder by taking over-ripened fruits and vegetables and extracting their natural pigments to create gemstones that are then transformed into beautiful pieces of jewellery.

Take a look at the bell jar in the Lobby Bar to see for yourself 🧐

Full story [here](#)



ANABELA CHAN

Summer Tea Salon

Served Saturdays & Sundays

Until 14th September

In the Lobby Bar

£32 per person for trio of patisseries and an iced tea

Served with Champagne Bollinger – charged separately

Overnight experience includes:

- Overnight stay in a suite (Friday, Saturday or Sunday)
- Breakfast
- Tea experience
- In-suite shopping experience



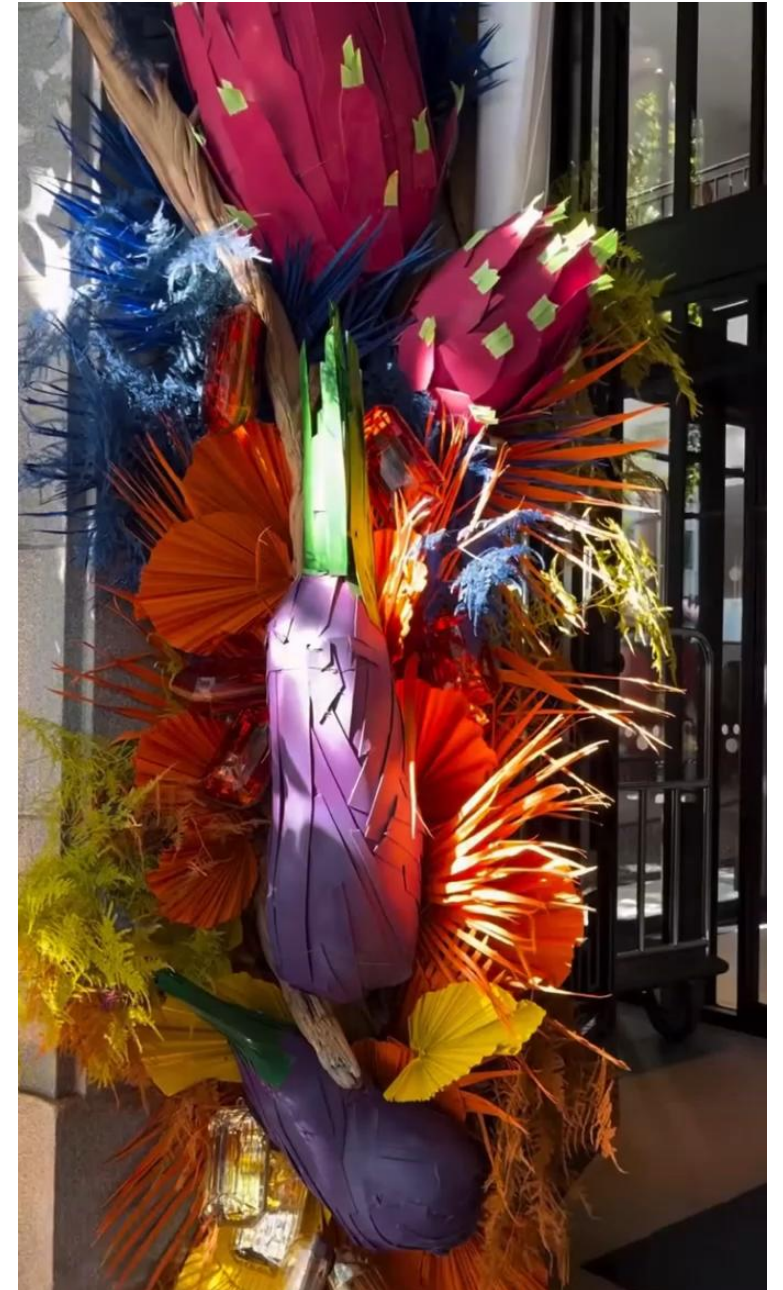
ANABELA CHAN

At the Front Door

Inspired by the new Fruit Gems collection, Mark has created a vibrant, summer-inspired arch installation.

Beetroot, cherry tomatoes, dragon fruit, leeks, aubergines... it's a fun celebration!

And a nice reminder of our Covent Garden location, where London's first flower, fruit and vegetable market was founded.



Beetroot Cherry Apple

A glossy cherry-red glaze reveals layers of blackberry and beetroot mousse, with a heart of lychee. Finished with a yellow ladybird perched on a chocolate sable – a jewel in the forest.



Apricot Mille-Feuille

Crisp, caramelised puff pastry layered with apricot and rooftop honey compote, silky diplomat cream and a touch of apricot gel. A golden, sun-drenched nod to tradition with a curious twist.



ANABELA CHAN

Raspberry Magic Mushroom

A whimsical centrepiece: raspberry jelly and lemon foam, scattered with caramel tuiles and white chocolate spots. Delicate and surprising.



Iced Teas

Berry & Hibiscus

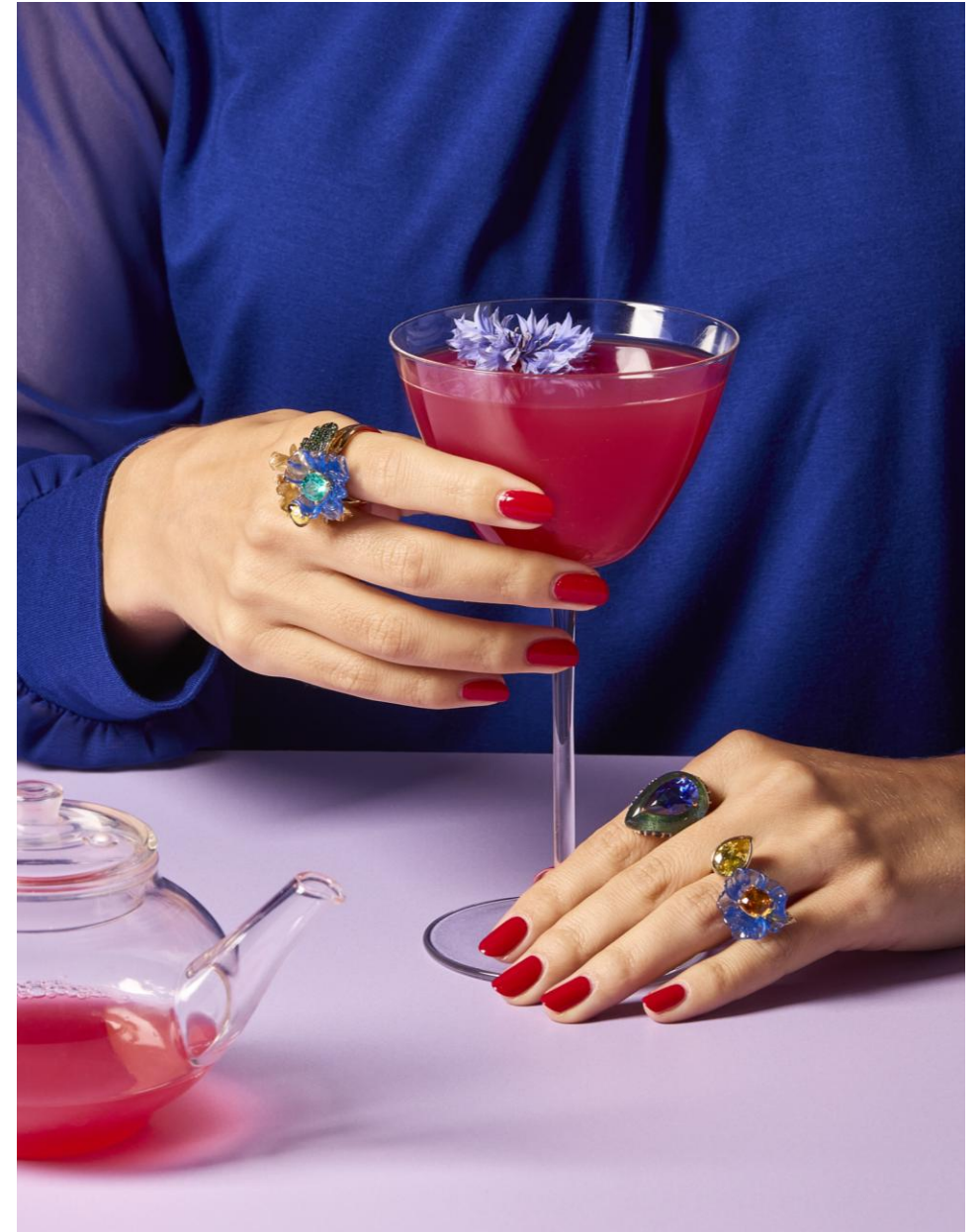
Hibiscus tea infused with fresh summer berries, honey and lime

Rhubarb & Rose

Rose tea with rhubarb, vanilla, lemon and ginger

Elderflower & Apricot

Lemon verbena, blue pea flower and green tea, with apricot, lemon and elderflower



ANABELA CHAN

Now it's time to spread the word

First press coverage is out

Internal pdf for team briefings

Influencers invited and already accepting

Anabela Chan's VICs invited and making reservations



COUNTRY & TOWN
HOUSE

C&TH Guides

SUSTAINABILITY CULTURE FOOD & DRINK TRAVEL STYLE INTERIORS PROPERTY SCHOOLS #TRENDING

Home > Food & Drink

One Aldwych Is Opening A Tea Pop-Up With Lab-Grown Jewellery Brand Anabela Chan

By Ellie Smith
3 Days Ago

Food meets fashion at this new eco tea pop-up

[This Post May Contain Affiliate Links. Learn More](#)



SUMMER TEA SALON with Anabela Chan

A sweet and sparkling collaboration for the summer

Who is Anabela Chan?

The first fine jewellery brand in the world to champion laboratory-grown gemstones with a focus on ethical and sustainable innovations. Worn by numerous celebrities and royalty, including Beyoncé, Rihanna, Lady Gaga and Taylor Swift, you can find their flagship boutique on Sloane Street.

Fruit Gems™

This is the new collection from Anabela Chan which turns waste to wonder by taking over-ripened fruits and vegetables and extracting their natural pigments to create gemstones that are then transformed into beautiful pieces of jewellery. Take a look at the bell jar in the Lobby Bar to see for yourself 🍷

Introducing our Summer Tea Salon

In line with our commitment to minimising food waste and inspired by this colourful collection, Chef Dominic's team have created a trio of sweet treats which will be served on Saturdays and Sundays until 14th September in the Lobby Bar alongside a selection of refreshing iced teas.

On the menu: Apricot Mille-Feuille | Beetroot Cherry Apple | Raspberry Magic Mushroom



To further bring the collaboration to life, our florist Mark has installed a fun front door arch of colourful fruits, vegetables and jewels – it's only been there a day and already we've seen lots of people stopping to take pictures, so please talk to our guests to tell them all about it!

Learn more and see the full menu on [our website](#) and keep up to date with the partnership through our social channels – [Instagram](#) and [LinkedIn](#).

